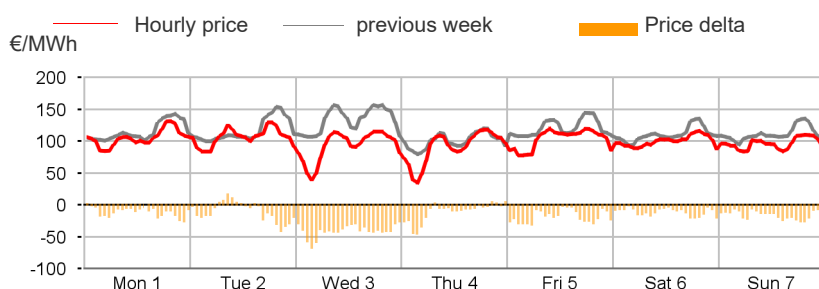


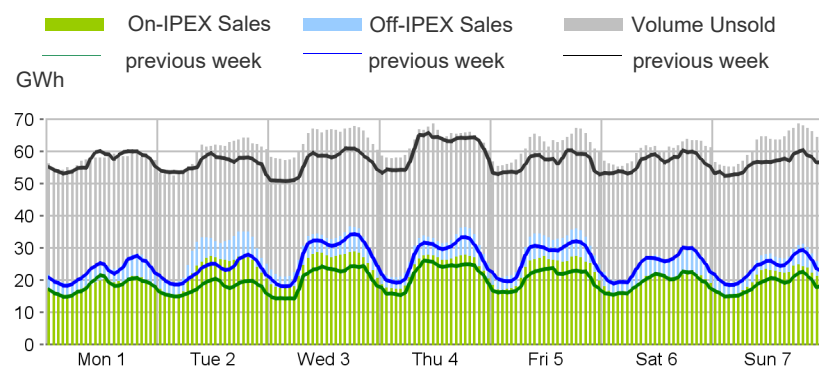
Purchasing Price

	Average	Change	
	€/MWh	Absolute	%
Baseload	100.01	-16.16	-13.9%
Peak	109.95	-17.27	-13.6%
Off-peak	96.04	-17.12	-15.1%
Hourly minimum	35.20		
Hourly maximum	132.00		



Volumes Offered, Sold and Purchased

		Total	Average	Change
		MWh	MWh	%
Bids/offers	National	9,150,313	54,466	+3.9%
	Foreign	1,074,702	6,397	+30.8%
	Total	10,225,015	60,863	+6.2%
Sales	National	3,489,627	20,772	+1.2%
	Foreign	1,070,681	6,373	+30.6%
	Total	4,560,308	27,145	+6.9%
Purchases	National	4,442,823	26,445	+6.7%
	Foreign	117,487	699	+13.1%
	Total	4,560,308	27,145	+6.9%



Electricity Supply

	MWh	Change	Structure
IPEX	3,644,914	+10.3%	79.9%
Market Participants	2,319,839	+5.9%	50.9%
GSE	288,297	-2.4%	6.3%
Foreign zones	1,036,778	+27.0%	22.7%
Balance of PCE schedules	-	-	-
PCE (including MTE)	915,394	-5.1%	20.1%
Foreign zones	33,903	+901.0%	0.7%
National zones	881,491	-8.3%	19.3%
Balance of PCE schedules	-	-	-
VOLUMES SOLD	4,560,308	+6.9%	100.0%
VOLUMES UNSOLD	5,664,707	+5.7%	
TOTAL SUPPLY	10,225,015	+6.2%	

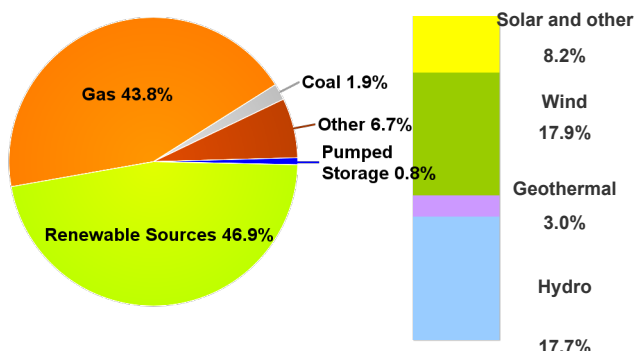
Electricity Demand

	MWh	Change	Structure
IPEX	3,644,914	+10.3%	79.9%
Acquirente Unico	392,236	+10.0%	8.6%
Other market participants	2,612,053	+15.5%	57.3%
Pumped-storage plants	2,479	817.35	0.1%
Foreign zones	117,487	13.1%	2.6%
Balance of PCE schedules	520,663	-10.5%	11.4%
PCE (including MTE)	915,394	-5.1%	20.1%
Foreign zones	-	-	-
Acquirente Unico - National zones	-	-	-
Other participants - National zones	1,436,056	-7.1%	31.5%
Balance of PCE schedules	-520,663		
VOLUMES PURCHASED	4,560,308	+6.9%	100.0%
VOLUMES UNPURCHASED	143,655	-6.6%	
TOTAL DEMAND	4,703,962	+6.4%	

Volumes Sold by Source

	Total	Average	Change	
	MWh	MWh	MWh	%
Conventional	1,826,605	10,873	-2,023	-15.7%
Gas	1,528,565	9,099	-1,969	-17.8%
Coal	64,752	385	-20	-4.9%
Other	233,289	1,389	-35	-2.4%
Renewable	1,636,104	9,739	+2,229	+29.7%
Hydro	618,553	3,682	-224	-5.7%
Geothermal	105,486	628	0	0.0%
Wind	625,485	3,723	+2,472	+197.6%
Solar and other	286,581	1,706	-19	-1.1%
Pumped Storage	26,917	160	+43	+36.2%
Total	3,489,627	20,772	+248	+1.2%

Structure of Sales



Zonal Selling Price

	Northern IT		Central-northern IT		Central-southern IT		Southern IT		Calabria		Sicilia		Sardegna	
	€/MWh	Var	€/MWh	Var	€/MWh	Var	€/MWh	Var	€/MWh	Var	€/MWh	Var	€/MWh	Var
Baseload	100.15	-13.6%	100.15	-14.1%	100.15	-14.2%	99.25	-14.6%	99.20	-14.6%	99.20	-14.6%	100.15	-14.2%
Peak	110.42	-13.0%	110.42	-13.8%	110.42	-13.9%	107.30	-15.0%	107.10	-15.1%	107.10	-15.1%	110.42	-13.9%
Off-peak	96.04	-14.9%	96.04	-15.3%	96.04	-15.4%	96.04	-15.4%	96.04	-15.4%	96.04	-15.4%	96.04	-15.4%
Hourly minimum	35.20		35.20		35.20		35.20		35.20		35.20		35.20	
Hourly maximum	132.00		132.00		132.00		132.00		132.00		132.00		132.00	

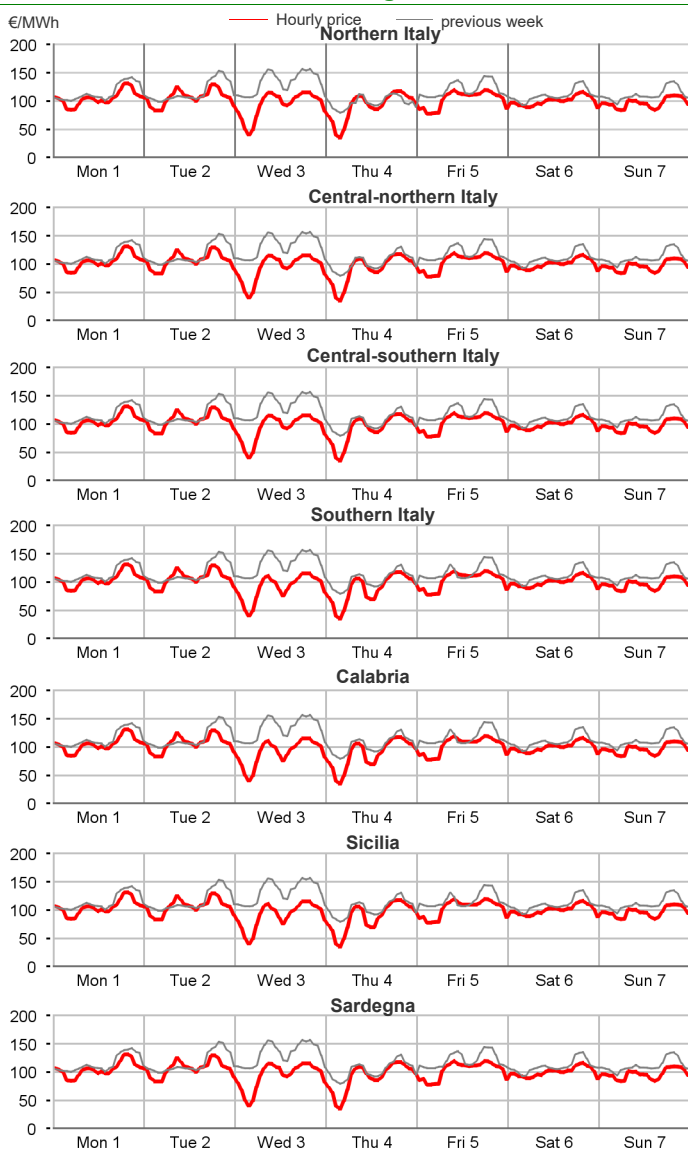
Zonal Volumes

	Northern IT		Central-northern IT		Central-southern IT		Southern IT		Calabria		Sicilia		Sardegna	
	MWh	Var	MWh	Var	MWh	Var	MWh	Var	MWh	Var	MWh	Var	MWh	Var
Offers														
Total	4,540,012	-1.0%	347,491	+3.8%	1,434,524	+3.4%	1,297,151	+13.9%	597,650	+9.2%	641,259	+18.7%	292,225	+8.1%
Average	27,024	-270	2,068	+75	8,539	+283	7,721	+943	3,557	+299	3,817	+602	1,739	+130
Sales														
Totale	1,590,468	-11.4%	254,538	-4.9%	316,407	+16.6%	505,910	+30.2%	294,551	+2.9%	287,731	+22.7%	240,022	+16.9%
Average	9,467	-1,215	1,515	-77	1,883	+268	3,011	+699	1,753	+50	1,713	+317	1,429	+207
Purchas														
Totale	2,356,850	+8.0%	398,858	+8.5%	844,425	+6.3%	298,750	+3.9%	102,389	+0.8%	291,172	+1.9%	150,379	+3.8%
Average	14,029	+1,041	2,374	+187	5,026	+296	1,778	+66	609	+5	1,733	+33	895	+32

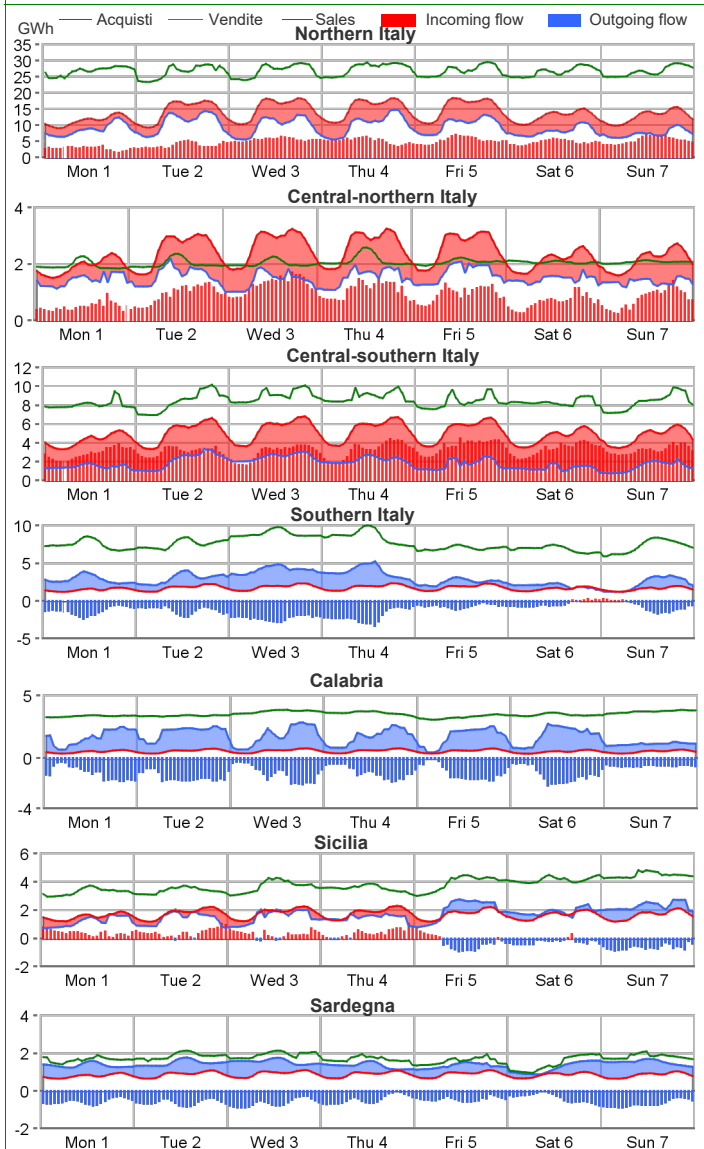
Volumes Sold by Source. Hourly Average

	Northern IT		Central-northern IT		Central-southern IT		Southern IT		Calabria		Sicilia		Sardegna	
	MWh	Var	MWh	Var	MWh	Var	MWh	Var	MWh	Var	MWh	Var	MWh	Var
Conventional	5,643	-15.2%	561	-17.3%	572	-14.0%	1,011	-25.5%	1,258	-14.7%	845	-19.3%	982	-3.3%
Gas	4,838	-16.3%	522	-17.2%	411	-17.7%	820	-29.0%	1,176	-18.3%	816	-19.7%	516	-5.6%
Coal	-	-	-	-	-	-	-	-	-	-	-	-	385	-4.9%
Other	805	-7.9%	39	-19.1%	161	-3.2%	190	-5.8%	82	126.4%	29	-8.8%	81	27.2%
Renewable	3,727	-4.7%	954	4.4%	1,248	31.6%	2,000	109.6%	495	117.0%	868	149.3%	447	115.9%
Hydro	2,604	-7.8%	171	14.2%	401	-8.1%	290	-1.3%	69	16.3%	112	2.0%	34	10.6%
Geothermal	-	-	628	0.0%	-	-	-	-	-	-	-	-	-	-
Wind	38	69.6%	49	167.4%	685	107.2%	1,542	210.8%	391	201.5%	667	343.0%	351	240.2%
Solar and other	1,084	2.1%	105	-9.9%	162	-10.7%	168	2.4%	35	-10.5%	89	1.4%	61	-15.4%
Pumped Storage	97	-16.2%	-	-	63	3,221.5%	-	-	-	-	0	-	0	-35.6%
Total	9,467	-11.4%	1,515	-4.9%	1,883	16.6%	3,011	30.2%	1,753	2.9%	1,713	22.7%	1,429	16.9%

Zonal Selling Price



Zonal Volumes



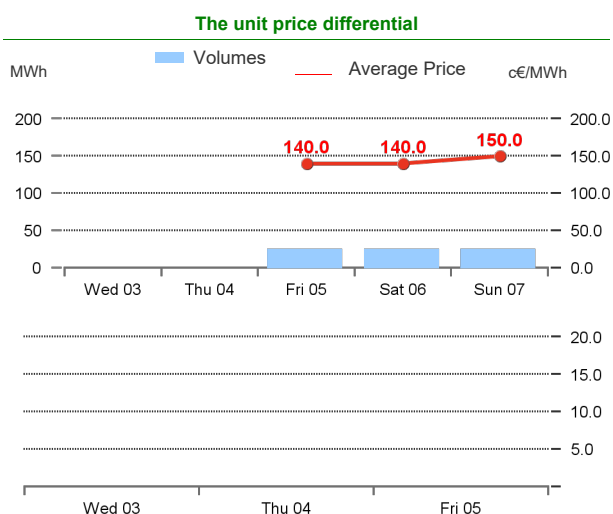
		Rent		Direction frequency		Average Physical Transmission Rights Assigned		Average flow		Average use of Physical Transmission Rights Assigned	
		Thousands of €		% of hours		MWh		MWh		%	
		Week no. 1	Week no. 52	Week no. 1	Week no. 52	Week no. 1	Week no. 52	Week no. 1	Week no. 52	Week no. 1	Week no. 52
Explicit auction Transmissions											
France - Northern It.	FRAN-NORD NORD-FRAN	-	-	-	-	0	0	-	-	-	-
Switzerland - Northern It.	SVIZ-NORD NORD-SVIZ	-	-	100.0%	100.0%	2,461	1,868	2,101	1,558	85.4%	83.4%
Austria - Northern It.	AUST-NORD NORD-AUST	-	-	-	-	0	0	-	-	-	-
Slovenia - Northern It.	SLOV-NORD NORD-SLOV	-	-	-	-	0	0	-	-	-	-
Montenegro - Central Southern It.	CSUD-MONT MONT-CSUD	-	-	100.0%	100.0%	643	662	574	574	95.6%	95.7%
Greece - Southern It.	GREC-SUD SUD-GREC	-	-	-	-	25	25	-	-	-	-
National Transmissions											
Northern It. - Central-Northern It.	NORD-CNOR CNOR-NORD	-	461	57.7%	83.3%	3,661	3,753	1,074	1,595	-	6.0%
Centr.-Northern It. - Centr.-Southern	CNOR-CSUD CSUD-CNOR	-	35	31.5%	70.8%	2,746	2,880	728	1,142	-	2.4%
Central-Northern It. - Corsica	CNOR-CORS CORS-CNOR	-	2	-	2.4%	150	150	-	139	-	1.8%
Corsica - Sardegna	SARD-CORS CORS-SARD	-	-	100.0%	97.6%	150	150	47	41	-	-
Sardegna - Corsica AC	SARD-COAC COAC-SARD	-	-	100.0%	100.0%	110	110	67	53	-	-
Central-Southern It. - Sardegna	CSUD-SARD SARD-CSUD	-	-	4.2%	13.7%	658	712	74	76	-	-
Central-Southern It. - Southern It.	CSUD-SUD SUD-CSUD	601	199	100.0%	99.4%	2,949	2,752	441	323	-	-
Southern It.-Calabria	SUD-CALA CALA-SUD	22	-	9.5%	10.1%	1,763	1,630	161	122	-	-
Sicilia-Calabria	SICI-CALA CALA-SICI	-	-	90.5%	89.9%	2,314	2,343	1,119	818	3.0%	-
Sicilia - Malta	SICI-MALT MALT-SICI	-	-	35.1%	14.3%	1,510	1,449	354	110	-	-
		-	-	64.9%	85.7%	1,540	1,539	417	457	-	-
		-	-	100.0%	95.8%	225	225	126	75	11.9%	-
		-	-	-	-	225	225	-	-	-	-
Market Coupling Transmissions											
IT Coupling - Northern It.	NORD-COUP COUP-NORD	-	-	100.0%	100.0%	10,000	10,000	2,816	1,961	-	-
Coupling - France Coupling	COUP-XFRA XFRA-COUP	-	-	100.0%	98.2%	2,097	2,097	2,948	1,920	19.6%	14.3%
Coupling - Slovenia Coupling	COUP-BSP BSP-COUP	-	-	57.7%	55.4%	672	672	576	615	37.5%	44.0%
Coupling - Austria Coupling	COUP-XAUS XAUS-COUP	-	-	31.0%	41.1%	634	606	470	590	14.3%	38.1%
Southern It. - Greece Coupling	SUD-XGRE XGRE-SUD	-	-	45.8%	39.9%	194	194	187	194	42.9%	38.7%
		-	-	37.5%	54.8%	490	479	376	463	20.8%	51.2%
		-	-	3.0%	9.5%	500	500	60	184	-	0.6%
		-	-	97.0%	90.5%	500	500	438	388	72.0%	44.6%

Transiti. MWh



Daily Products Market (MPEG)

Products	Price			Volumes		Open Positions	
	minimum	maximum	average	MW	MWh	MW	MWh
Baseload	c€/MWh	c€/MWh	c€/MWh				
Wednesday 3							
Thursday 4							
Friday 5	140.0	140.0	140.0	1	24	1	24
Saturday 6	140.0	140.0	140.0	1	24	1	24
Sunday 7	150.0	150.0	150.0	1	24	1	24
Week	140.0	150.0	143.3	3	72		
Peakload							
Wednesday 3	-	-	-	-	-	-	-
Thursday 4	-	-	-	-	-	-	-
Friday 5	-	-	-	-	-	-	-
Week							
TOTALE				3	72		



Forward Electricity Market (MTE)

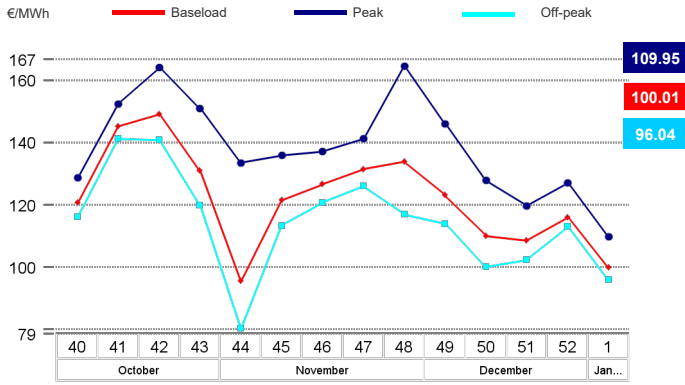
Products baseload	Market					OTC				Total			
	Minimum Price	Maximum Price	Check Price*	Trades	Volumes	Volumes		Volumes		Open Positions*			
	€/MWh	€/MWh	€/MWh	% change	No.	MW	MWh	MW	MWh	MWh	% change	MW	MWh
February 2024	-	-	111.18	0.0%	-	-	-	-	-	-	-	8	5,568
March 2024	-	-	103.71	0.0%	-	-	-	-	-	-	-	8	5,944
April 2024	-	-	102.53	0.0%	-	-	-	-	-	-	-	-	-
Quarter 2, 2024	-	-	102.53	0.0%	-	-	-	-	-	-	-	5	10,920
Quarter 3, 2024	-	-	110.88	0.0%	-	-	-	-	-	-	-	5	11,040
Quarter 4, 2024	-	-	122.28	0.0%	-	-	-	-	-	-	-	5	11,045
Quarter 1, 2025	-	-	115.50	0.0%	-	-	-	-	-	-	-	-	-
Year 2025	-	-	99.00	0.0%	-	-	-	-	-	-	-	-	-
Total													44,517
Products peakload													
February 2024	-	-	123.63	0.0%	-	-	-	-	-	-	-	2	504
March 2024	-	-	111.51	0.0%	-	-	-	-	-	-	-	2	504
April 2024	-	-	103.30	0.0%	-	-	-	-	-	-	-	-	-
Quarter 2, 2024	-	-	106.13	0.0%	-	-	-	-	-	-	-	2	1,560
Quarter 3, 2024	-	-	116.78	0.0%	-	-	-	-	-	-	-	2	1,584
Quarter 4, 2024	-	-	139.47	0.0%	-	-	-	-	-	-	-	2	1,584
Quarter 1, 2025	-	-	127.88	0.0%	-	-	-	-	-	-	-	-	-
Year 2025	-	-	106.68	0.0%	-	-	-	-	-	-	-	-	-
Total													5,736
TOTAL													50,253

* Referred to the last trading session of the week

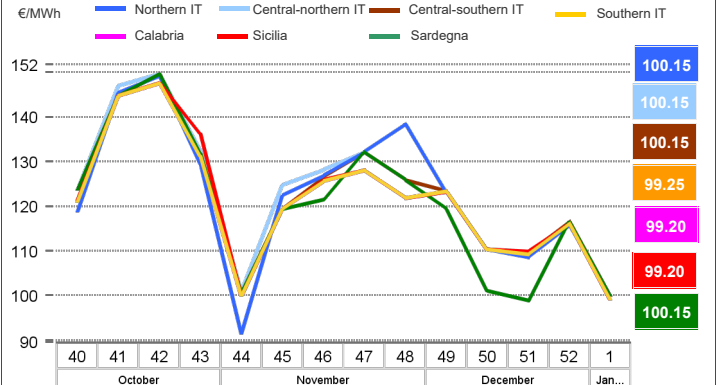
OTC Registration Platform (PCE) - Transactions registered with delivery in week

	Transactions registered			Schedules	Injection		Withdrawal	
	MWh	% change	Structure		MWh	% change	MWh	% change
Baseload	654,939	7.5%	17.5%	Requested	1,350,417	+7.8%	1,436,057	-7.2%
Peak	990	135.7%	0.0%	Rejected	435,023	+51.2%	1	-100.0%
Off Peak	810	275.0%	0.0%	Registered	915,394	-5.1%	1,436,056	-7.1%
Non Standard	3,081,850	-7.4%	82.4%	Scheduled deviation	1,426,448	+8.2%	905,785	+23.1%
Bilaterals	3,738,589	-5.0%	100.0%	Balance of schedules			520,663	
MTE	1,464	-3.2%	0.0%					
MPEG	72	-	0.0%					
PCE total	3,740,124.56	-5.0%	100.0%					
Net position	2,341,841	+2.6%	+62.6%					

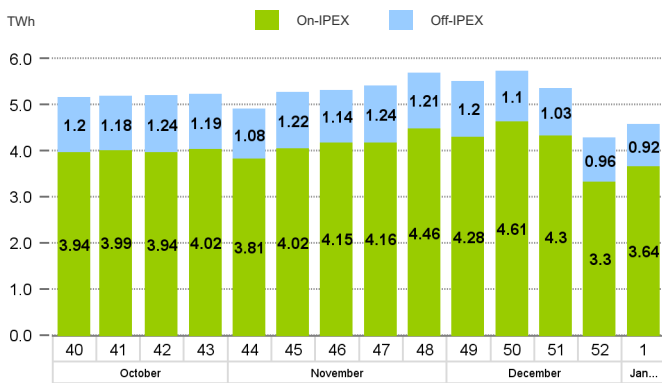
MGP - Purchasing Price (PUN)



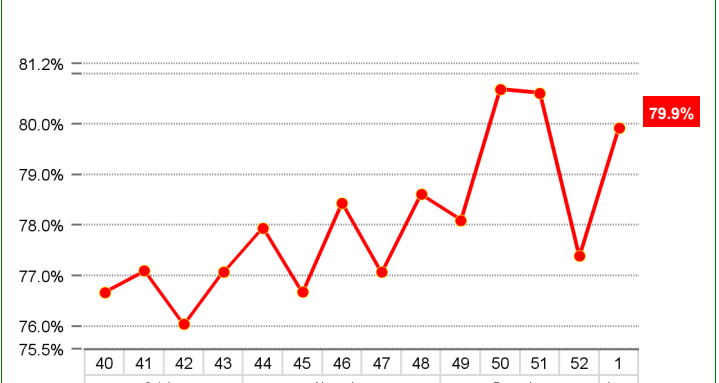
MGP - Selling Price



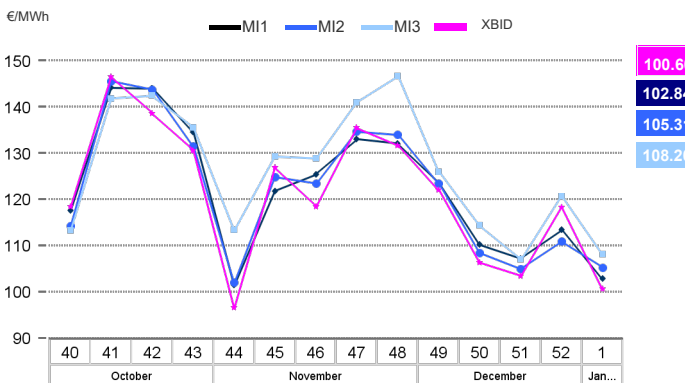
MGP - Volumes



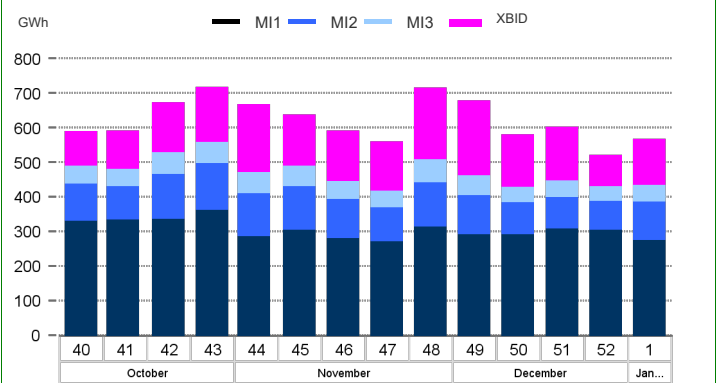
MGP - Liquidity



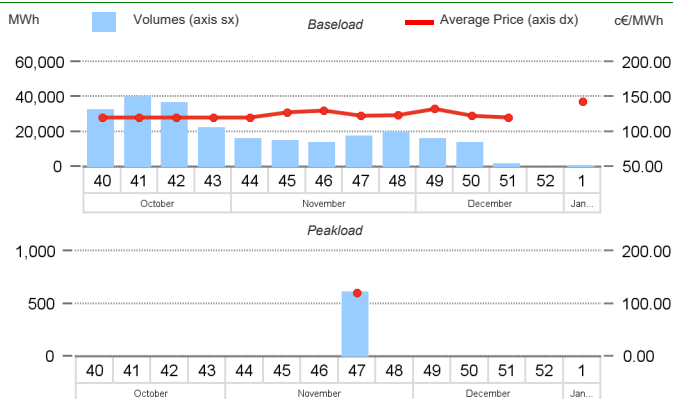
Intra-Day Market (MI) - Prices



MI - Volumes



Daily Products Market (MPEG)



OTC Registration Platform (PCE)

